



# NAVIS™

YACHT DESIGN & LIFESTYLE

ISSUE 80 | OCTOBER/NOVEMBER/24

AMERICA'S CUP  
2024

Events  
MONACO YACHT SHOW 2024

Bilgin 50m  
ETERNAL SPARK

Baglietto 52m  
Akula

Southern Wind 26m  
Nyumba

JFA Yachts 34m  
Mousetrap

Luxury Lifestyle  
The Ferrari KC23

[www.navisyachts.com](http://www.navisyachts.com)



A Showcase of Luxury and Innovation in Yachting

# MONACO YACHT SHOW 2024

Photos: Monaco Yacht Show Media, Blue iProd Media, Jarmo Pohjaniemi, Winch Design, Italian Sea Group Media, Gilles Martin-Raget, Baltic Yachts Media, Benetti Media, Bilgin Media, Maurizio Paradisi, Alia Yachts Media, Mishi Yachts Media, Feadship Media, JCraft Media, Heesen Media, Mangusta Media, Enrico Gobbi, ICON Yachts Media, Habacoo Media, MONTE-CARLO Société des Bains de Mer, Guillaume Cottancin, NAVIS Media | Words: Pablo Ferrero

Arriving in Monte Carlo is always a moment of awe, but arriving at sunset on September 24th for the Monaco Yacht Show 2024 elevated that feeling to something truly unforgettable. From my vantage point high above Port Hercules, the golden light bathed the principality's iconic skyline, the historic Monaco Rock standing tall as a centuries-old sentinel overlooking the harbor. Below, nestled against the deep blue waters, a dazzling fleet of the world's most exceptional yachts were docked, their sleek hulls gleaming in the fading sunlight.

As I made my way toward the harbor, my eyes were immediately drawn to some of the most remarkable vessels on display. In a commanding position at the cruise line dock was Lürssen's 112-meter Renaissance, a symbol of pure opulence. Just ahead of her sat Oceano's striking 90-meter DAR, a yacht that effortlessly married contemporary elegance with groundbreaking design. Yet it was the newly launched Lürssen 122-meter Kismet that truly stole the show, her majestic presence and cutting-edge features making her the undisputed star of this year's event.

The atmosphere in Monte Carlo that evening was a perfect balance of calm anticipation and understated elegance. A gentle breeze stirred the Mediterranean air as I prepared for the show's opening festivities. After a quick refresh, I made my way to Equivoque Rooftop Bar, where Lusben hosted an exclusive sunset cocktail reception. As live music drifted across the terrace, the setting sun reflected off the superyachts below, and the mood was one of quiet sophistication. This was the perfect opportunity to reconnect with colleagues from the industry, enjoying fine food and conversation as we looked ahead to the days of luxury and innovation that awaited us.



## Bilgin Yachts

### M/Y Eternal Spark

Making her world premiere at the show, Bilgin Yachts' M/Y Eternal Spark encapsulates luxury with sleek and sporty lines designed by Unique Yacht Design and refined interiors by Hot Lab. The yacht's minimalist yet detailed aesthetic is crafted from over 200 different materials. With expansive open decks, she offers six guest cabins, ensuring a charter experience that is both spacious and intimate.



MOTOR YACHT



Bilgin Yachts 50m

ETERNAL SPARK

Photos: Bilgin Yachts Media | Words: KL Turner





## Bilgin Yachts Eternal Spark Charms the Charter Market Ahead of Monaco Premiere

Basking in the glow of a glorious Mediterranean summer, Bilgin Yachts new launch Eternal Spark is wrapping up a classic inaugural itinerary with an essential debut at The Monaco Yacht Show. The first of Bilgin's 50-meter series, Eternal Spark proved quite the social influencer in her initial season, sporting a full dance card of charter groups, cruising to fashionable ports in the south of France and along the Italian coast.

Designed expressly with the charter market in mind, Eternal Spark's secret stash of convertible, dual-duty, versatile features come from the brilliant pairing of exceptional exterior hull lines from Unique Yacht Design with status-setting interiors from Milan's Hot Lab. The result is a comfortable, highly sociable, people-pleasing charter yacht that feels like home, but with the significant upgrade of a seagoing location.

Bilgin has created amazing magic with recent builds like the 80-meter Tatiana in 2021 and the equally riveting 80-meter Leona in 2023, so the stage was set for high expectations. The plan, however, was different this time. Both of those previous masterpieces were created for specific owners, designed to faithfully execute their respective briefs to deliver very personalized yachts. Eternal Spark was not created for a single individual.

The Spark, it seems, needed to be versatile and engaging, while keeping an elegant profile capable of doing many things well. In other words, a single yacht that appealed to as many charter guests as possible. Did it work? See for yourself.

### Eternal Spark By The Numbers

Built Eternal Spark measures 49.95 meters with a 9.25-meter beam and a 2.60-meter draft. Two CAT C32 1081 kW engines power the yacht to a maximum speed of 17 knots. The cruising speed of 12 knots delivers an approximate 5,000 nautical mile range. Fuel capacity is 55,000 lt and water capacity is 11,000 lt.

Built by Bilgin in Türkiye with a steel displacement hull and an aluminum superstructure, her exterior design and naval architecture are from Unique Yacht Design in Antalya. Interiors are from Milan firm Hot Lab, using 60 natural finishes, with 14 types of marble.

Eternal Spark accommodates 12 guests in six staterooms, attended by 10 crew. Guest cabins include four doubles and two twins, both of which are convertible to doubles via a very slick sliding rail system that simply slips over a nightstand separating the twin berths and changing the layout to an amenable walkaround double. Total living area is 1120 square meters, 610 of which are indoors and 510 outdoors.

She has a 21-meter sun deck, a 12-meter aft bridge deck, and a 5,000-liter eight-person sun deck Jacuzzi. The openness and lack of obstacles make Eternal Spark an ideal charter choice.

# 1551802

## The Beach Club

Boarding from the stern platform, the large transom door raises to toast the beach club a few steps down. Outfitted with a sauna boasting an ice fountain just outside its door, and a flat screen visible through the glass wall, the lounge area is uncluttered and inviting. The lowered level puts guests in touch with the sea, with a real sense of immersion in the spacious beach club lounge with sofa, seating, and tables. A day head sits starboard, directly forward of the sauna.

Emrecan Özgün, CEO of Unique Yacht Design says of the arrangement, ***"Eternal Spark is a key example of a yacht that has undergone numerous customizations, including an extension to her stern. One of the most enjoyable parts of these boats is the aft areas. Knowing that semi-platform beach clubs and main deck sitting areas close to the sea are where owners prefer to spend much of their time, we moved sea toys from the aft to the forward deck, allowing the crew to work more comfortably."***

## The Main Deck

Wrapped to port and starboard, stairs from the beach club to the main deck lead to the aft deck sofas and curved bar. A starboard stair behind the bar accesses the bridge deck.

Further forward through sliding glass doors, the main deck salon invites guests with full height windows and lots of light. Organically shaped furnishings give the space a comfortable and casual look. Chic accessories and fixtures give the space a soft sophistication that puts guests at ease while pampering their aesthetic side.

Forward of the dining space, the circular stair and main deck lobby sparkle brightly. Lit by filtered sunlight through the sun deck Jacuzzi pool as well as a handsome array of LED lighting and beautiful crystal chandelier and lamps, the circular stair on Eternal Spark delivers quiet luxury with every step. To port, a pantry serves the aft guest areas. Further of the stair and lobby is a day head to starboard and a galley to port, with cold room and food lift. A separate crew lobby and crew stair are located between the two.

Fully forward, the owner's suite welcomes guests through the office to starboard, opening graciously to the bedroom with expansive windows. The dual baths sit forward of the sleeping area, to both port and starboard, with a steam shower accessible to both sides. A spacious dressing room is located to port, with a scrumptious sofa beneath the window.

## The Bridge Deck

Accessing the Bridge Deck either from the aft deck stair or the central staircase, the feel is light, airy, open, and spacious. The aft deck sofa has a convertible back that allows guests to face forward into the yacht or aft with a view over the stern. A large dining table sits fore to aft, and a curved corner bar to port with seating provides a nice niche for a casual refresher.

Forward through sliding glass doors, the Bridge Deck Salon features a pair of L-shaped sofas and central table, with angled bar to starboard and day head to port. The view through the glass staircase sprinkled with daylight through the sun deck Jacuzzi sets a lyrical scene.

Just forward, the captain's cabin sits to starboard and the pantry to port. Further forward, the wheelhouse provides a panoramic view for guests from a posh sofa perch. The side decks on the main to port and starboard both have stairs that lead up to the forward lounge positioned forward of the wheelhouse. Sofa seating and tables invite guests to take in the view from the bow. A tensioned awning provides partial shade, while those who prefer sun can also find bliss.

## The Sun Deck

Called the Sun Deck for a reason, the expansive sun pads fully aft on the deck beckon the worshippers. Forward, under the hard top Bimini, a U-shaped sofa with tables sits to starboard. Another inviting bar with a gentle curve sits to port, along with a Barbecue and a day head.

Fully forward, an eight-person Jacuzzi with generous sun pads invites a soothing soak by day or a stargazing dip by night.









1802

#### The Lower Deck

Descending to the lower deck from the central stair, double en suite guest cabins with king sized beds sit amidships to both port and starboard. The VIP guest cabin sits athwartship just aft, with a luxurious en suite bath to port. Aft of the VIP cabin and separated by a bulkhead, the engine room sits between the VIP and the beach club.

Forward of the central stair, two en suite twin guest cabins mirror to port and starboard, with the unique sliding rail system that converts them to double cabins in an instant. All have hanging lockers and divine fresh linen treatments that keep the spaces posh, each with their own palette yet all with stone mosaics segmented with golden lines.

Further forward and separated by a bulkhead, the crew areas maintain privacy. The laundry and dedicated crew stair sit to starboard, opposite the crew mess and galley. Sleeping quarters with en suite baths sit fully forward.

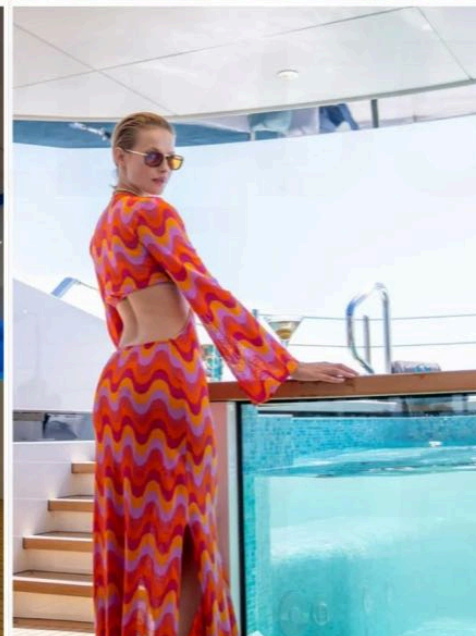
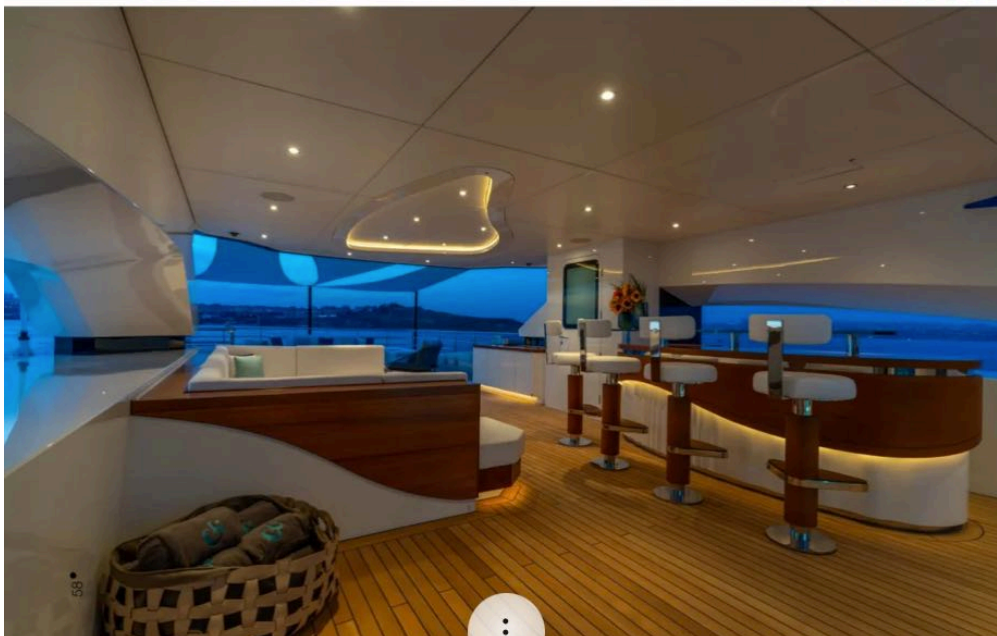
Of the overall interior design, Enrico Lumini, partner and Design Director at Hot Lab, notes, *"Our interior design for Bilgin 163 follows the studio's new philosophy, called 'Architecture for Voyagers' and focuses on cleanliness of architectural volumes, and a renewed sense for a softness of lines."*

#### Just for Fun

The Shooting Spark custom chase boat is ready to take guests out for water adventures on towables or wakeboards, or perhaps on an adventurous shore excursion. Seadoo Spark branded personal watercraft, Lift eFoil boards, sea bobs, paddle boards and pool toys offer additional options.

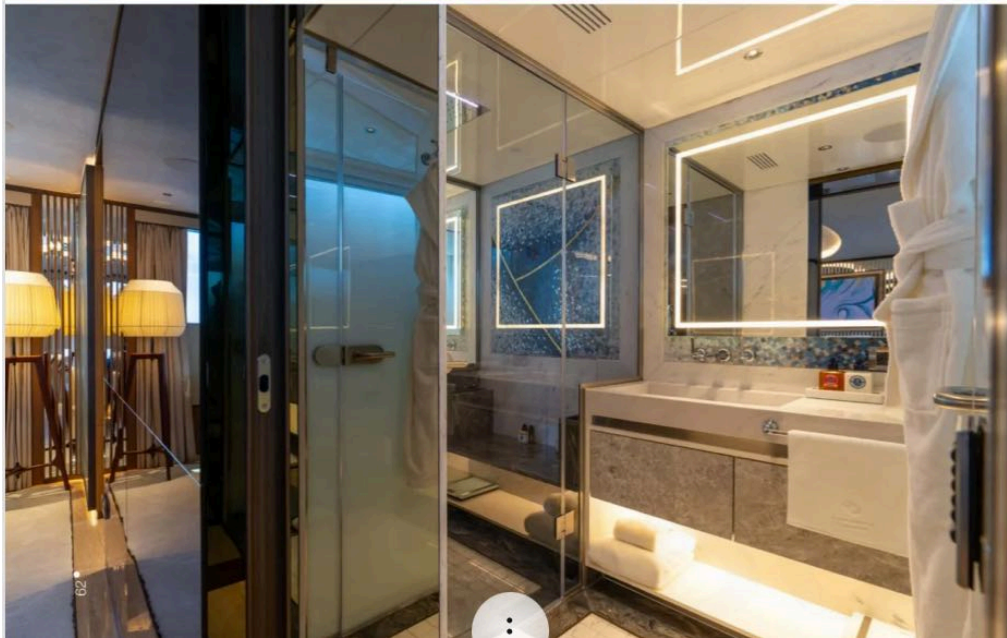
As the sun lowers its gaze it is time to provide adventure for the senses. The mesmerizing glow of creatively placed LED lighting across all decks and underwater paint a multichromatic work of art with light and shadow. Energy efficient and beautifully integrated designs set the mood with a sensual display to delight guests well into the night. Additionally, the large cinema screen on the bow takes center stage for media entertainment, but should the weather not cooperate, the indoor cinema can take over in the Sky Lounge with blackout curtains. Pop up screens forward and aft in the main salon are also visible from sofas lining both sides of the space.

Dining on board Eternal Spark provides a euphoric culinary experience through a detox menu by a Michelin star chef. Beneath the curving LED lighting structure with beautiful views through full height windows to port and starboard along the entire salon and dining space layer the gustatory ambiance with pleasing visuals.

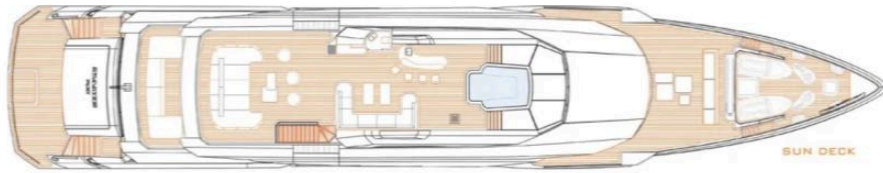


1802

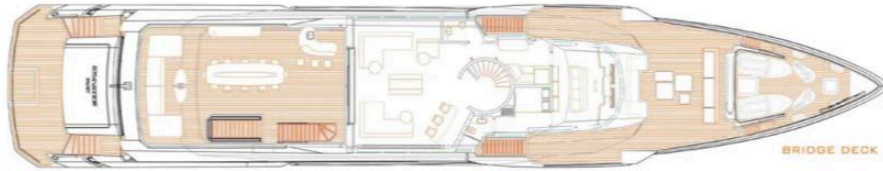




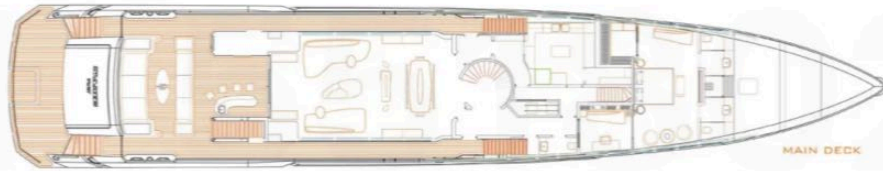
1 5518021 55



SUN DECK



BRIDGE DECK



MAIN DECK



LOWER DECK

#### Notably Different From Her Peers

Designed expressly for the charter market, Eternal Spark boasts larger spaces with multiple purposes in mind, catering to a variety of uses and preferences. Berkay Yilmaz, Commercial Director of Bilgin Yachts, describes, *"the interior of the new Bilgin 163 as modern, luxurious, and elegant."* Yilmaz adds that *"The yacht is the most technically equipped 499 GRT yacht, comparable to Bilgin Yachts' iconic 80-meter Superyachts Tatiana and Leona."*

Hallı Unzunbabalar, Senior Project Manager, points out that many shipyards have abandoned the in-house manufacture of detailed furniture, while Bilgin continues the tradition. *"The meticulously designed and crafted furniture elevates the yacht's luxury and comfort,"* Unzunbabalar stated, adding, *"We achieved top-level quality in our technical areas by using the best materials and the latest technologies for the yacht's performance and safety."*

A collective pool of industry leaders, from designers, artisans, yacht brokers, crews, and charter guests, provided important knowledge for Eternal Spark's creators. That broad input enabled unique and innovative solutions that are simple and practical, while delivering a level of casual chic that is at once both comfortable and sophisticated. Prepared to please a party with diverse passions and interests, Eternal Spark is well-equipped to inspire fabulous memoirs from each and every guest. ☺

#### Specifications

|   |                                |
|---|--------------------------------|
| » LOA:                                  | 49.95m                         |
| » LWL at full load:                     | 48.26m                         |
| » Beam overall:                         | 9.25m                          |
| » Draught at full load:                 | 2.60m                          |
| » Displacement at full load:            | 495t (full load)               |
| » Gross tonnage:                        | 499gt                          |
| » Fuel capacity:                        | 55,000lt                       |
| » Water capacity:                       | 11,000lt Main engines: CAT C32 |
| » Engines power:                        | 2x1,081 kW @ 2,150 RPM         |
| » Maximum speed:                        | 16.5 kn                        |
| » Cruising speed:                       | 12 kn                          |
| » Range at cruising speed at half load: | app. 5,000 miles               |

