

We share the same passion

# boat

# attitude

ETERNAL SPARK: WORLD PREMIERE  
AT THE MONACO YACHT SHOW!

KISMET: A 122M ICON OF  
SUPERYACHT INNOVATION

CUSTOM LINE NAVETTA 38:  
A FUSION OF ARTISTRY AND DESIGN

ULYSSIA RESIDENCES AG:  
320M ULTRA YACHT

LUXURY SHOP





New Superyacht

# ETERNAL SPARK

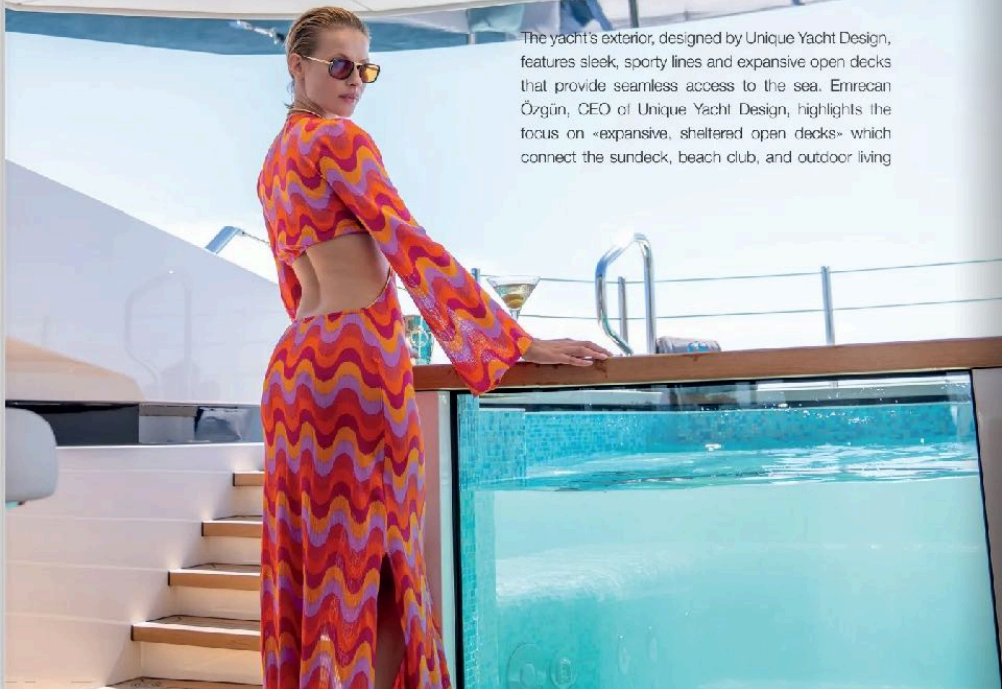
Bilgin Yachts' masterpiece debuts at the MYS 2024



The highly anticipated Eternal Spark, a standout in the Bilgin 163 series, will make its world premiere at the Monaco Yacht Show 2024. This 50-meter masterpiece from Bilgin Yachts is set to redefine the standards of luxury and design in the yachting world. Designed with meticulous attention to detail, Eternal Spark offers a unique blend of expansive outdoor spaces, elegant interiors, and cutting-edge technology, making it one of the most sought-after yachts of the season.

## INNOVATIVE EXTERIOR DESIGN

The yacht's exterior, designed by Unique Yacht Design, features sleek, sporty lines and expansive open decks that provide seamless access to the sea. Emrecan Özgün, CEO of Unique Yacht Design, highlights the focus on «expansive, sheltered open decks» which connect the sundeck, beach club, and outdoor living



areas into a harmonious whole. These spacious areas allow guests to experience the beauty of the sea in ultimate comfort, with features such as a vast beach club and a sundeck that includes a 5,000-liter Jacuzzi pool.

## ELEGANT AND DETAILED INTERIORS

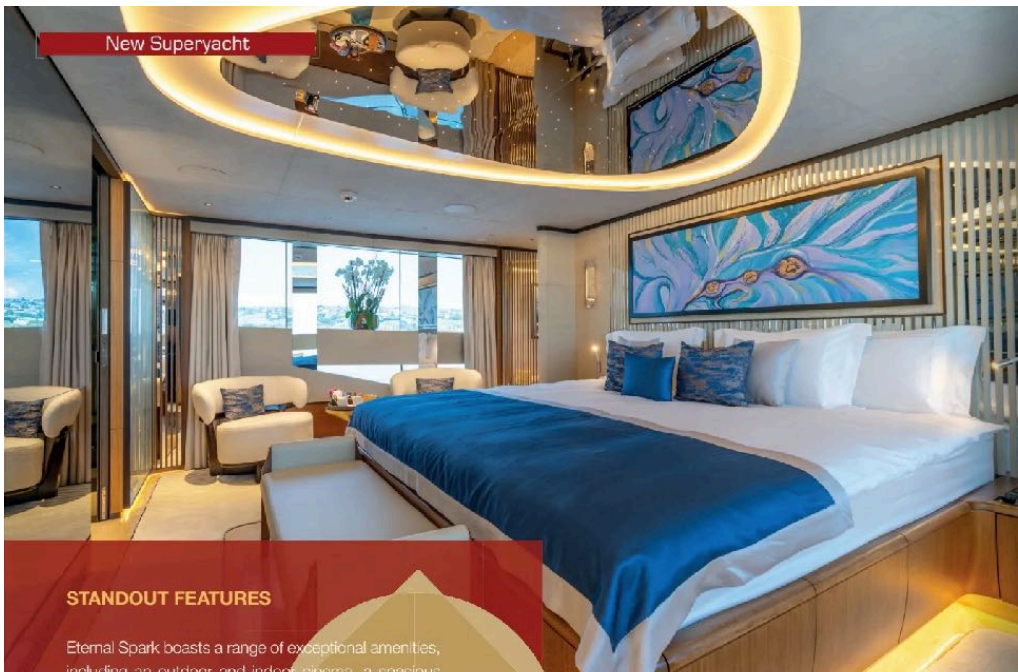
Inside, Eternal Spark continues to impress with interiors crafted by Hot Lab. Enrico Lumini, Partner and

Head of Design at Hot Lab, describes the yacht's design as an embodiment of the studio's "Architecture for Voyagers" philosophy, which blends clean architectural volumes with soft lines. The interior offers six luxurious guest cabins accommodating up to 12 guests, and multiple indoor and outdoor social areas. Over 200 different materials were used to create a refined yet minimalist aesthetic, ensuring a sophisticated and welcoming environment.





## New Superyacht



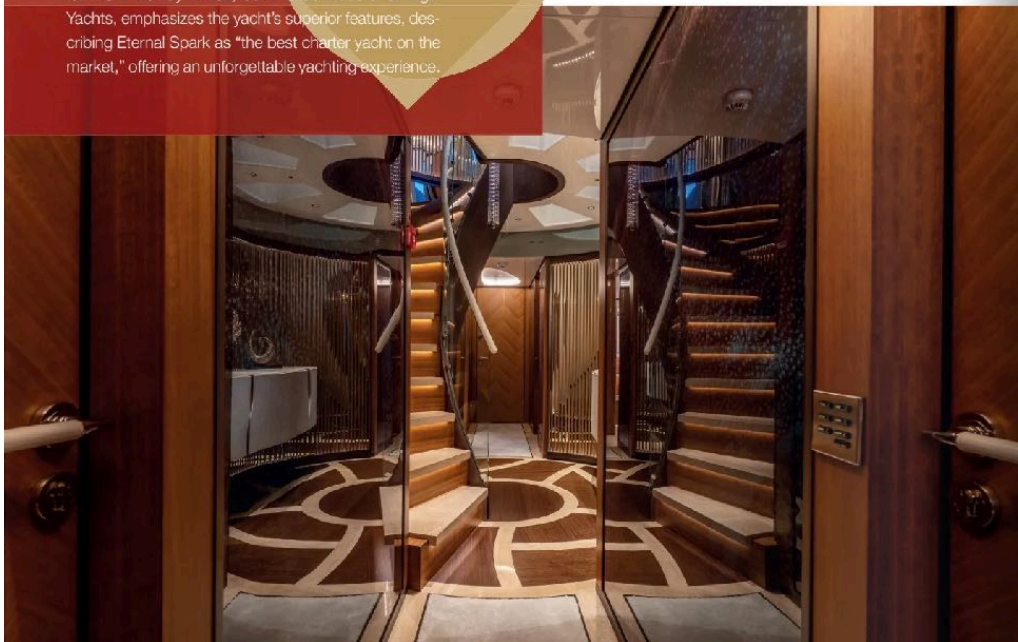
### STANDOUT FEATURES

Eternal Spark boasts a range of exceptional amenities, including an outdoor and indoor cinema, a spacious beach club with a sauna, and a transformer swimming platform that provides easy access to the sea. The yacht's layout, with its focus on maximizing outdoor spaces, is designed to offer both relaxation and entertainment. Berkay Yilmaz, Commercial Director of Bligin Yachts, emphasizes the yacht's superior features, describing Eternal Spark as "the best charter yacht on the market," offering an unforgettable yachting experience.



### PERFORMANCE AND CRAFTSMANSHIP

Powered by twin 1,450 CAT engines, Eternal Spark reaches a top speed of 17 knots while maintaining low operational costs. Senior Project Manager Halli Uzunbabalilar highlights the yacht's craftsmanship, noting that the detailed furniture and spacious living areas reflect Bligin's commitment to luxury and comfort. With advanced technologies ensuring peak performance and safety, Eternal Spark sets a new benchmark in the industry. The design focus of Eternal Spark and its sister ships in the Bligin 163 series centers on





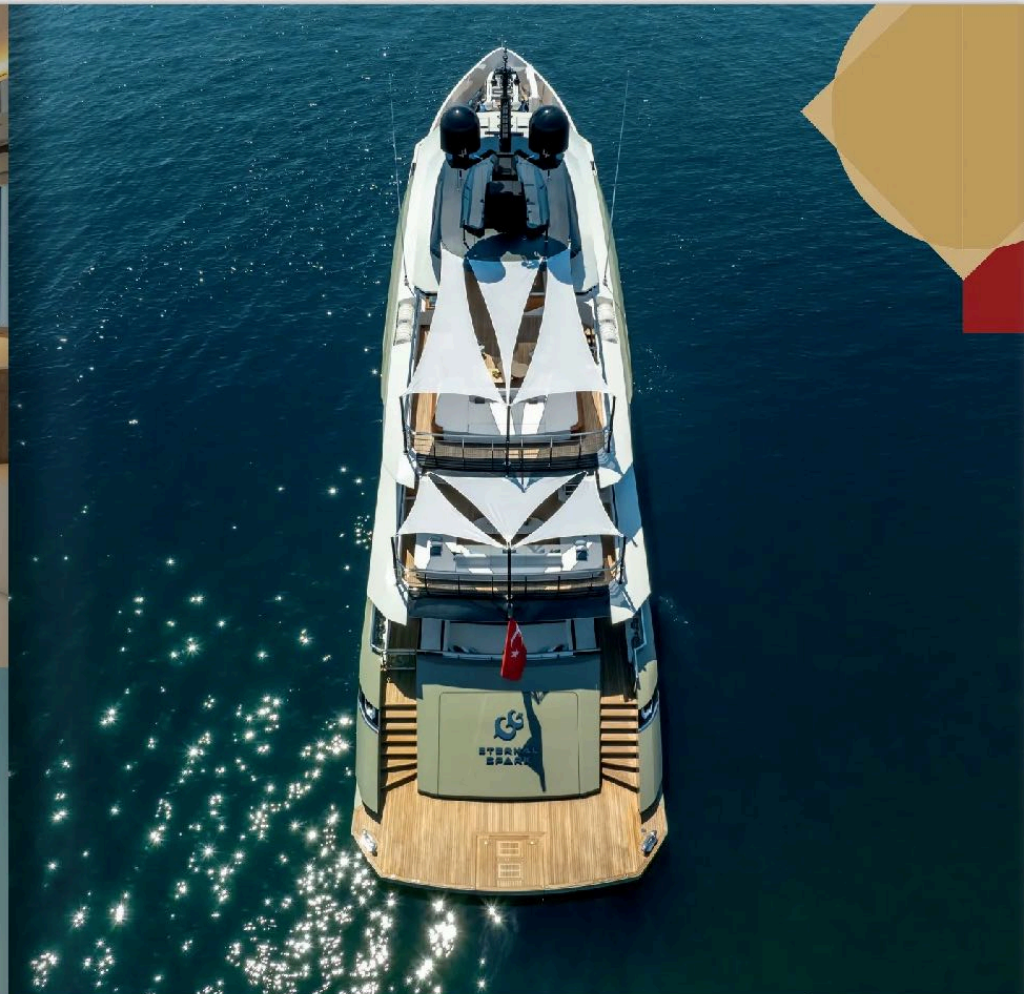
New Superyacht



“Eternal Spark blends sleek design, expansive spaces, and cutting-edge innovation for an unrivaled yachting experience.”

creating expansive, sheltered outdoor spaces that blend functionality with elegance. The 499 GT platforms offer flexibility in exterior furniture configurations, allowing owners to tailor the yacht to their preferences. This emphasis on outdoor living is further enhanced by moving the sea toys to the forward deck, creating more space in the aft areas, including the main deck and beach club.

As Eternal Spark prepares to make its debut at the Monaco Yacht Show, she promises to leave a lasting impression on the global yachting community. Available for charter in the 2024 season, this yacht offers an exceptional combination of design, innovation, and luxury for an unforgettable experience at sea. ■ ■ ■



TECHNICAL SPECIFICATIONS

HULL CONFIGURATION	DISPLACEMENT	WATER CAPACITY	11,000LT
HULL MATERIAL	STEEL	MAIN ENGINES	CAT C32
S/STRUCTURE MATERIAL	ALUMINIUM	ENGINES POWER	2X1,081 KW @ 2,150 RPM
LOA	49.95M	MAXIMUM SPEED	17
LWL AT FULL LOAD	48.26M	CRUISING SPEED	12
BEAM OVERALL	9.25M	RANGE AT CRUISING SPEED AT HALF LOAD	APP. 5,000 MILES
DRAUGHT AT FULL LOAD	2.80M	EXTERIOR DESIGN	UNIQUE YACHT DESIGN
DISPLACEMENT AT FULL LOAD	495T (FULL LOAD)	NAVAL ARCHITECT	UNIQUE YACHT DESIGN
GROSS TONNAGE	499GT	INTERIOR DESIGN	HOT LAB
FUEL CAPACITY	55,000LT	BUILDER	BILGIN YACHTS