

# ELEVATED

SPRING 2024

YACHTS



**TURQUOISE YACHTS**  
**JEWELS**



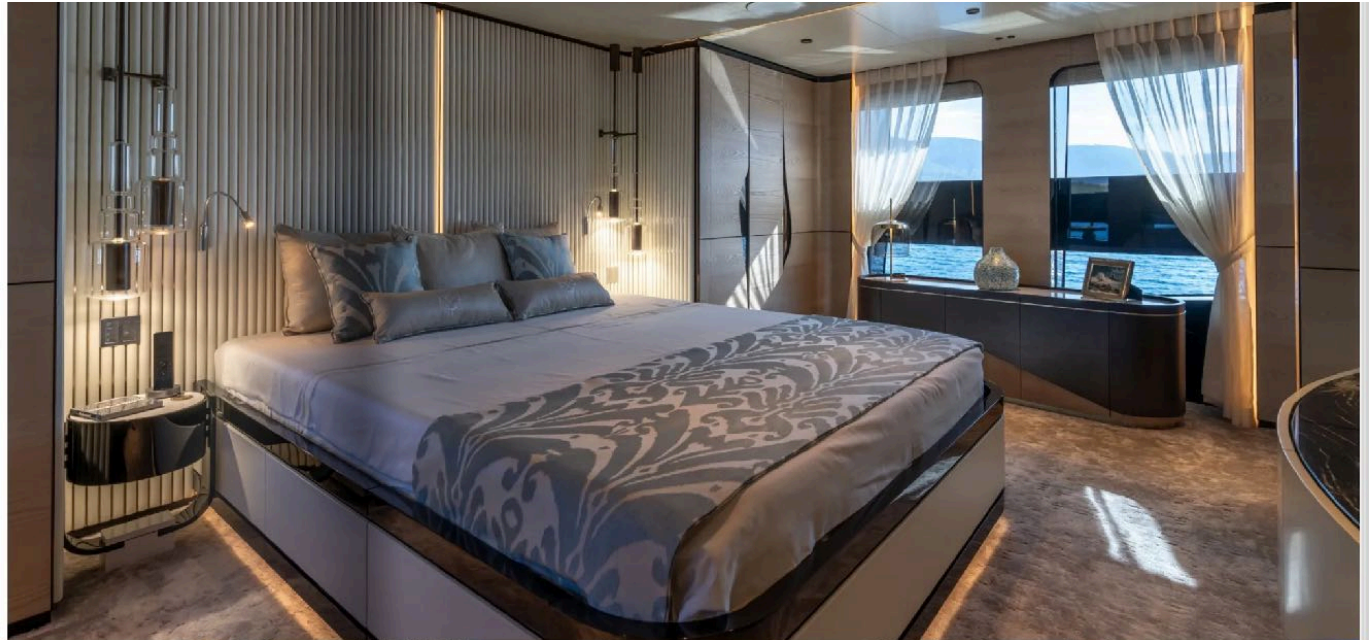
**MY KAŞIF  
HOT LAB STUNNING  
INTERIOR DESIGN**

The talented team at Italian design studio Hot Lab are no strangers to creating exquisite yacht interiors at the very centre of bespoke, so when they were approached to develop the interior for a new 41.9-metre explorer yacht being built at renowned Turkish superyacht yard Bilgin Yachts they took it all in their stride. But this was to be no ordinary project.

From highly experienced owners who stayed central to the project to the design, engineering and shipbuilding prowess of Unique Yacht Design and Bilgin Yachts, the resulting yacht would not only forge a path for a new model of explorer but would also do so with incredible attention to detail and finish in a perfect example of complementary collaboration.

First displayed at the 2023 Monaco Yacht Show last September, the 41.9-metre Kasif – which translates from Turkish as ‘explorer’ – combines lithe yet purposeful styling with excellent hull efficiency, meaning she can offer her owners a 5,000-plus mile range at her economical cruising speed. Her owners have strong maritime shipping connections, and being a captain and an architect between them they had strong ideas both for the technical and the aesthetic design elements of Kasif.

“We quickly realised that the preparation and dedication of the two owners – he a captain and she an architect – would require something more than our usual organisational procedure,” begins Enrico Lamini, Partner and Head of Design at Hot Lab. “The entire family is strictly related to the sea and the maritime world, and while the husband oversaw most of the technical matters, his wife collaborated closely with us in creating such a beautiful vessel. Of course, both have influenced us in the design in different ways, but their ideas and support have been crucial for the end result.”







Kasif is the culmination of a collaborative effort with Unique Yacht Design. Emrecan Özgün from Unique Yacht Design describes Kasif as the true embodiment of an explorer, engineered for exceptional maritime performance and says: "Our primary goal was to create a yacht that not only pushes the boundaries of maritime performance but also redefines the very concept of exploration on the open sea."

The yacht serves a dual purpose for the owner's business in offshore fish farming, requiring a vessel that is not only rugged but also safe for travel to their farms situated at least 1 miles from the coastline. One of the standout features of Kasif is its hull, which draws inspiration from the acclaimed 80-metre series. This design choice not only enhances efficiency but also minimises fuel consumption while allowing the yacht to achieve impressive speeds. Kasif consumes a mere 30 litres of fuel while sailing at 8 knots, and 60 litres at 10 knots, a testament to its exceptional engineering.

#### Interior Elevated

Working with a couple who knew exactly what they wanted made for a challenging project – but that's the sort of challenge that the experienced Hot Lab team excels at. Taking a compelling brief from the owners, then translating that brief into a finished design for interior décor and furniture alongside the teams at Bilgin Yachts, Unique Yacht Design and contractor Septemtar made for a cohesive and collaborative process that has yielded exceptional results.

"Our goal, together with the owners, was to create a recognisable, intense style, full of details, but at the same time able to be received by a large audience," Lumini explains. "Our interpretation of the owners' wishes was for a modern, almost contemporary style both in the geometries and also the materials, but at the same time full of elements that could recall the interests and activities of the owners. We have also tried to modulate the design in such a way that each deck recalls the same style, but at the same time with different elements that are capable of recalling different moods."

HotLab.it

